



RETRO

'RETRO' is a style that confidently combines an authentic look with the best of today's technologies while remaining appropriately nostalgic.

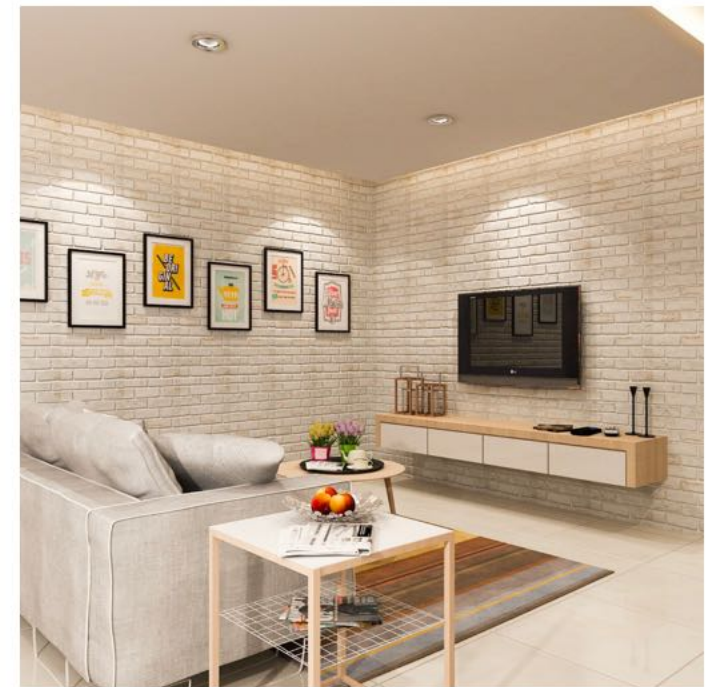
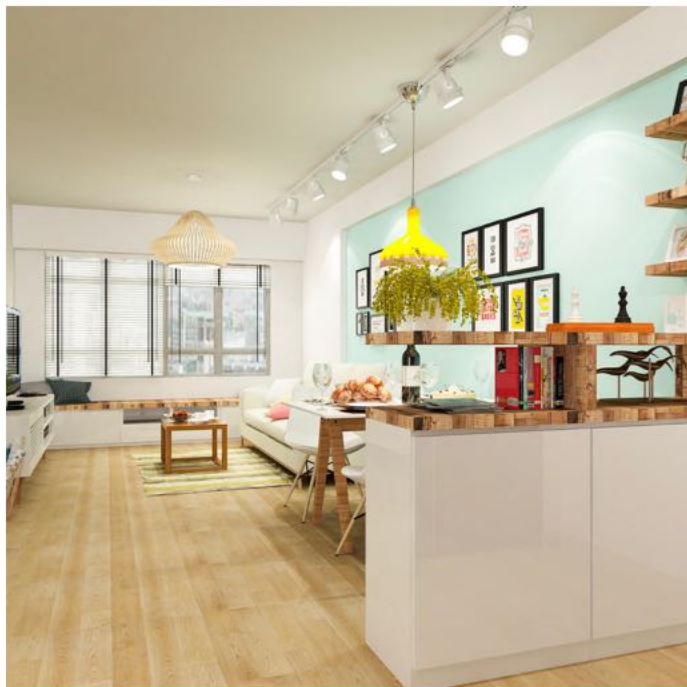
Imagineer





SCANDINAVIAN

The Scandinavian interior design is characterized by minimalism, simplicity, and functionality. Although the Scandinavian design has been around since the 1950s, it still remains a popular trend in interior design today.





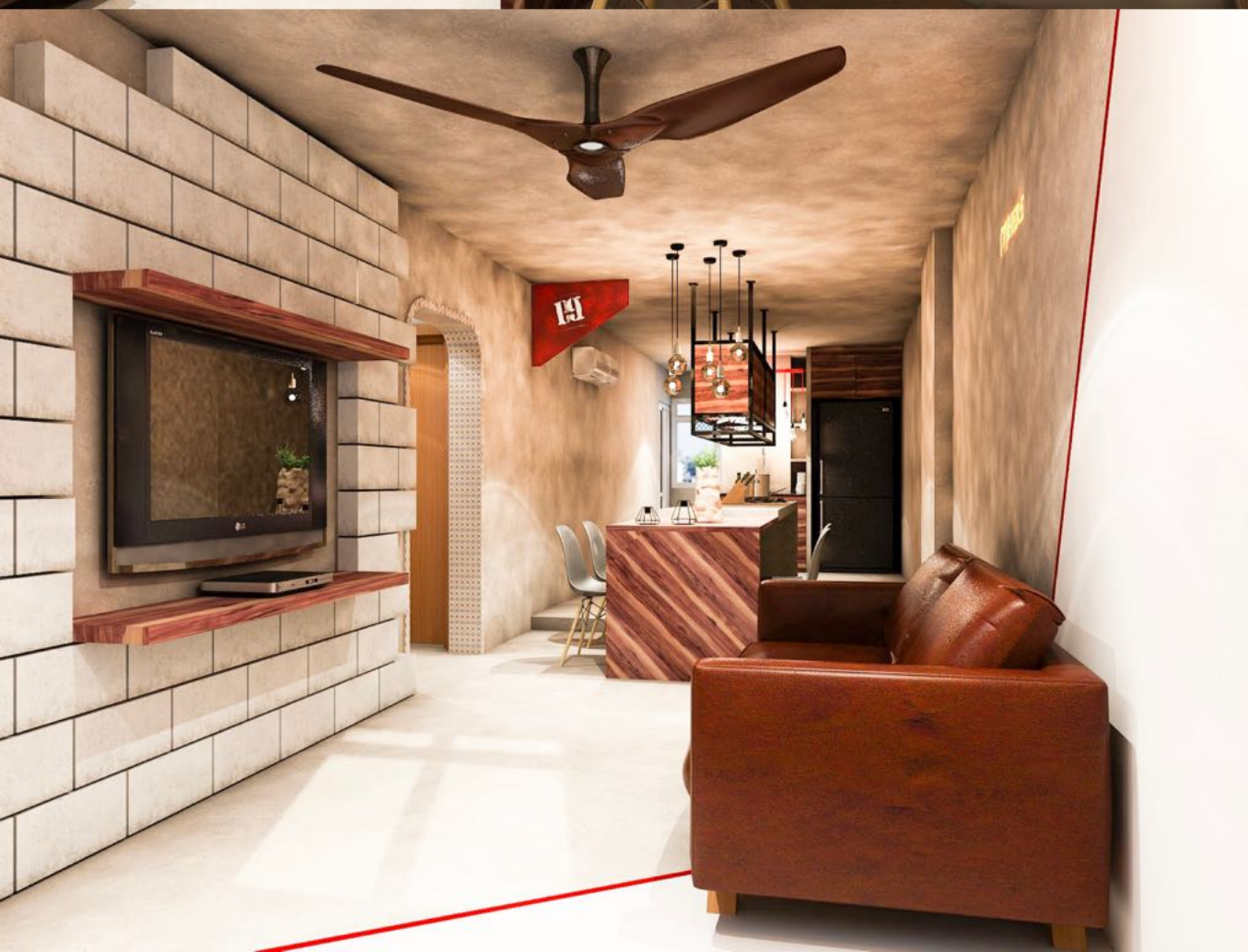






INDUSTRIAL

It's about proudly displaying the building materials that many try to conceal. It's about adding a raw, unfinished look to the most thoughtfully designed homes. It's about selecting pieces that are as much about function as style.





CLASSIC

Traditional decorating is calm, orderly, and predictable.
There is nothing wild or chaotic in a traditional room.









RESORT

A tropical decor is equally at home with sleek, streamlined modern furnishings or traditional dark wood antiques. The vibrant colors of a tropical color scheme work well with the deepest colors of the outdoors.





MODERN

Modern is a broad design term that typically refers to a home with clean, crisp lines, a simple colour palette and the use of materials that can include metal, glass and steel.







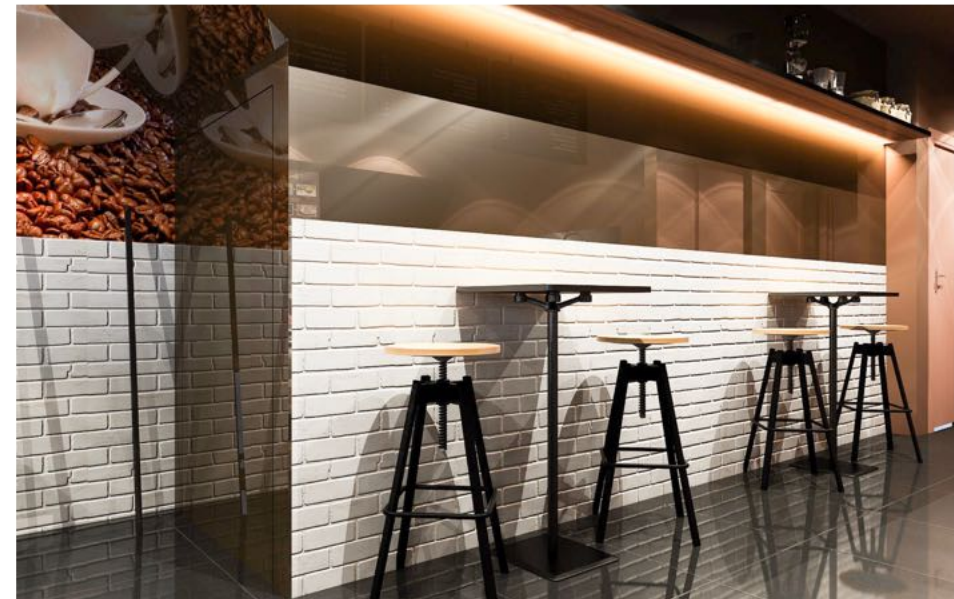








Coffee Shop





SPA

